

# MONTHLY MEMBERSHIP PROGRESS REPORT

LOCATION INDONESIA

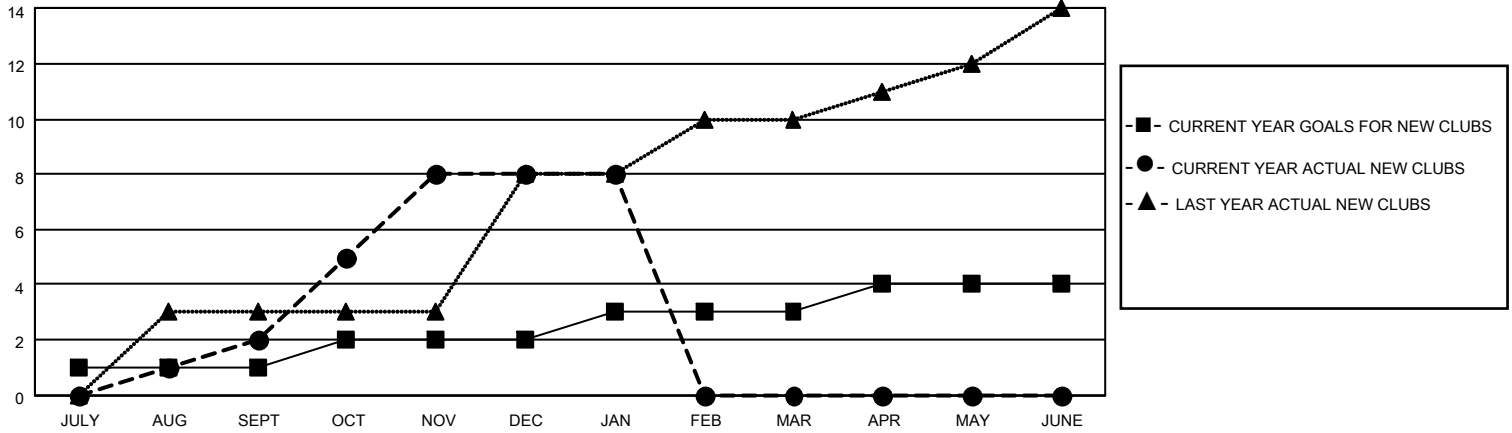
District 307B2

Results as of: 1/31/2022

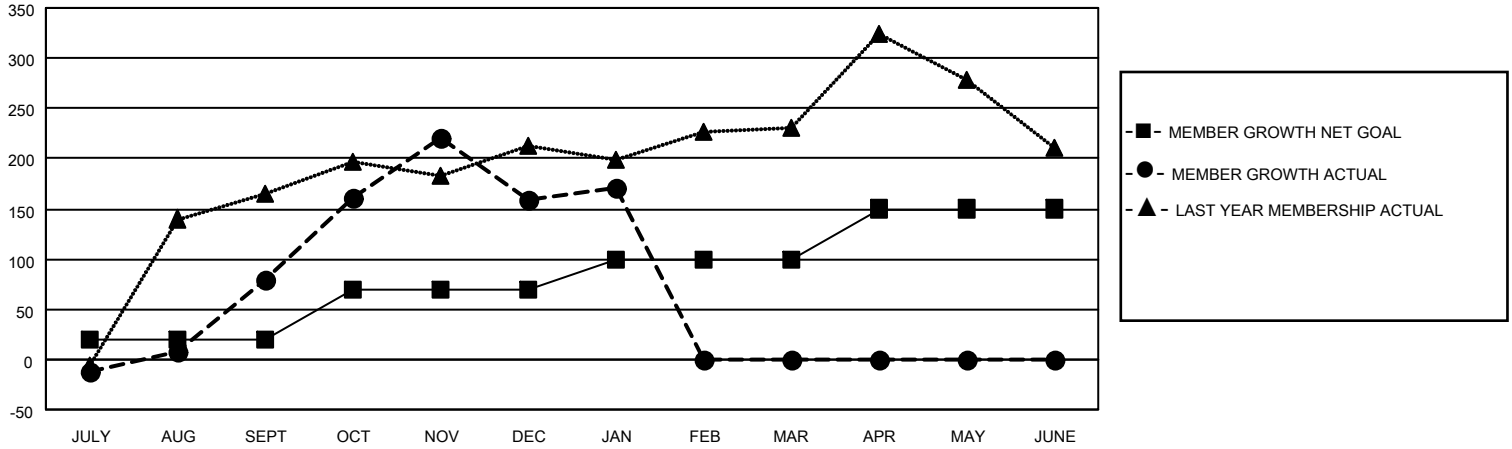
Clubs			
RESULTS FOR 2021-2022			
QUARTER	NEW CLUB GOAL	NEW CLUBS	DROPPED CLUBS
JULY/AUG/SEPT	1	2	4
OCT/NOV/DEC	1	6	1
JAN/FEB/MAR	1	0	0
APR/MAY/JUNE	1	0	0

Members			
RESULTS FOR 2021-2022			
QUARTER	MEMBER GROWTH NET GOAL	MEMBER GROWTH ACTUAL	DROPPED MEMBERS ACTUAL (including transfers)
JULY/AUG/SEPT	20	164	83
OCT/NOV/DEC	50	263	179
JAN/FEB/MAR	30	22	9
APR/MAY/JUNE	50	0	0

**GOALS AND ACTUAL NEW CLUBS CUMULATIVE**



**GOALS AND ACTUAL MEMBERS CUMULATIVE**



**DROPPED CLUBS: 5**

61 CLUBS OF 97 ADDED 1 OR MORE NEW MEMBERS

GENDER DISTRIBUTION

MALE	1,170 (37.54%)
FEMALE	1,947 (62.46%)
NON BINARY	0 (0.00%)
PREFER NOT TO ANSWER	0 (0.00%)

DROPPED MEMBERS

[CLICK HERE FOR CUMULATIVE MEMBERSHIP DATA](#)

DECEASED	18
CLUB CANCELLED	51
OTHER	202
<b>TOTAL</b>	<b>271</b>

TOTAL FAMILY UNIT MEMBERS 552

FAMILY MEMBERS PAYING HALF DUES 300